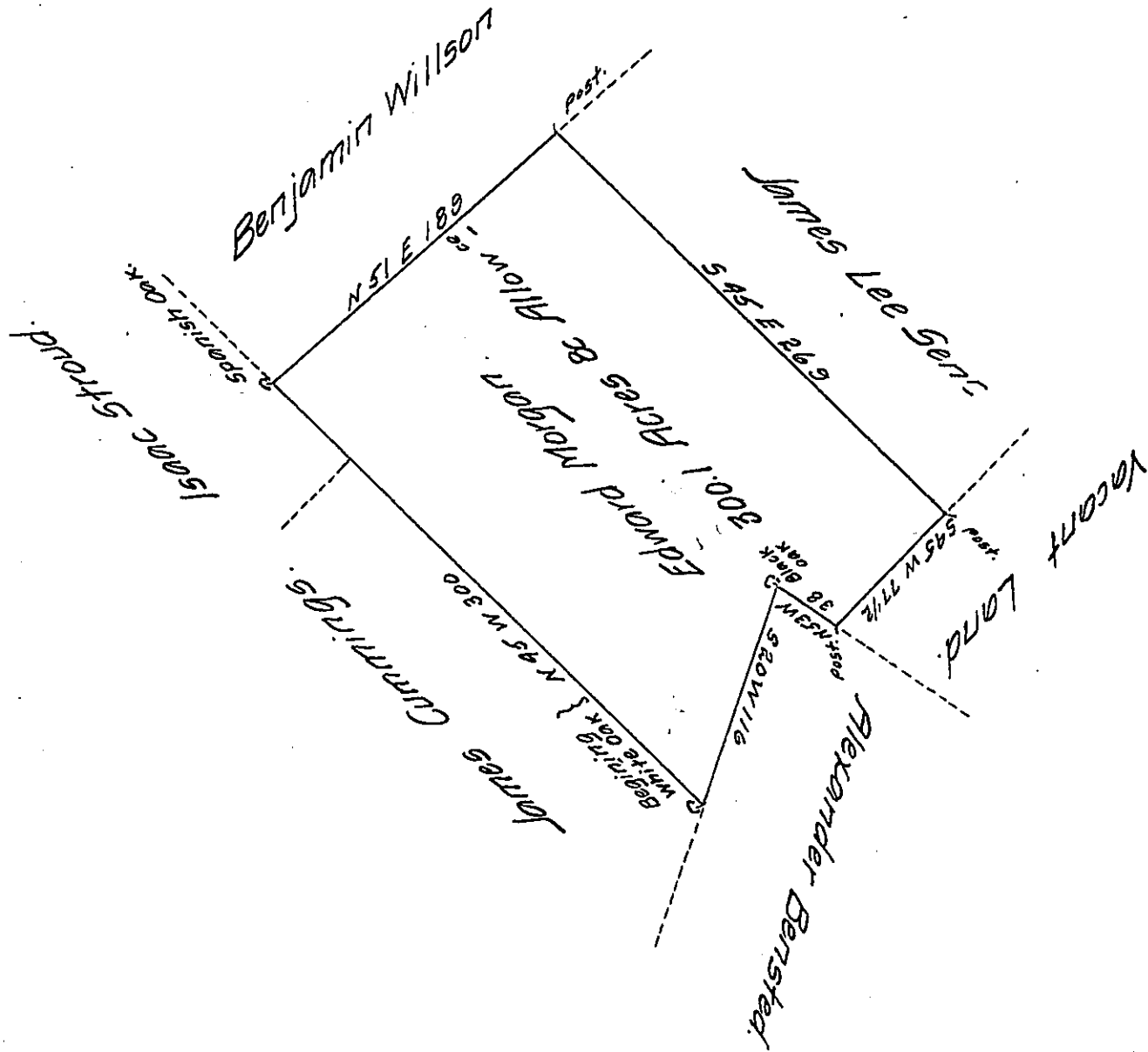


FORM No. 1.



The Draught of a Tract of Land called Glassenburg situate in Kishacoquillis Valey in the County of Cumberland containing Three Hundred Acres Eighteen Perches and the usual allowance of Six Acres & Cent for Roads Survey'd the 1st Day of November Anno Dom. 1766 In Pursuance of an Order of Survey to Edward Morgan Bearing Date at Philada the 1st Day of August Anno Dom. 1766 No. 157 to me directed.

of Wm Maclay Dept^y Surv^s

To John Lukens Esq^r Surv^r Gen^l of the Province of Pennsylvania }

IN TESTIMONY that the above is a copy of the original remaining on file in the Department of Internal Affairs of Pennsylvania, made conformably to an Act of Assembly approved the 16th day of February 1833, I have hereunto set my hand and caused the Seal of said Department to be affixed at Harrisburg, this fourteenth day of August 1907.

Henry Howick
Secretary of Internal Affairs.